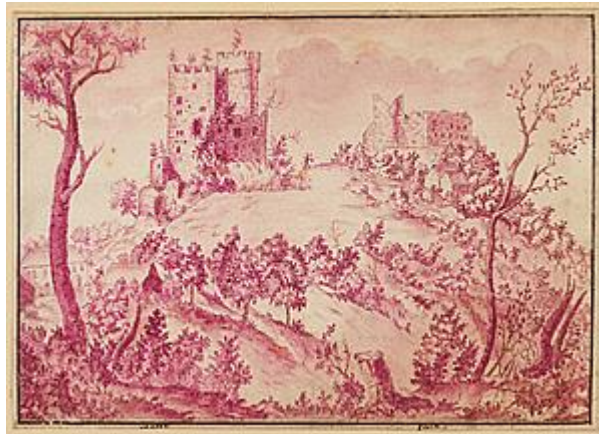


STEPHEN ONGPIN FINE ART



Early 17th century Northern School (1600 - 1650)

Landscape with a Castle on a Hill

Pen and brown ink and violet wash, with framing lines in black ink.

Inscribed Scoffer and gall(?) in the lower margin.

106 x 147 mm. (4 3/8 x 5 3/4 in.)